



acquire care

helpful friendly care for you

*“Making every day special”*



## Welcome to Acquire Care

Acquire Care is an independent company which provides high quality care services. We believe that everyone should be able to stay in their own home if this is their wish. For those who need assistance, Acquire Care can supply helpful and friendly carers to make living at home easier and more enjoyable.

By supplying hourly care packages as well as live-in care, it is possible to ensure the right care and support is given so that your home is the best place for you. As it is often the small details that make all the difference to happiness, we listen to what you want.

We are accredited and have contracts with Social Services and the Health Service. Acquire Care's policies and procedures are written in compliance with the Health and Social Care Act 2008 and the Care Quality Commission's Essential Standards of Quality and Safety. At all times, Acquire Care believes that the rights of the Client are paramount.

Please contact us for a free, no-obligation meeting. This will be arranged in your own home at a time that is convenient to you and your family.

N. Boers

Nick Boers  
Owner of Acquire Care



7am: Wake up

visit [www.acquirecare.co.uk](http://www.acquirecare.co.uk)

talk to us 01865 601010





# About Us

Acquire Care exists to supply helpful and friendly care services to enable you to enjoy living in your own home.

Nick Boers, the owner, has a vision of providing the best home care possible. He is committed to helping people enjoy living in their own homes. He believes that the care provided should be of the quality that he would like to receive.

There is an excellent team in the office. The head of the team is the Registered Manager who brings a wealth of experience to the Company, having worked in domiciliary care for many years. The carers are chosen via a comprehensive selection process. Only the carers with the highest communication, commitment and dedication skills are recruited.

Acquire Care can help and support you. We employ the carers so that you do not have to worry about any employment tax, insurance, holiday or other employer's liabilities.



8am: Breakfast



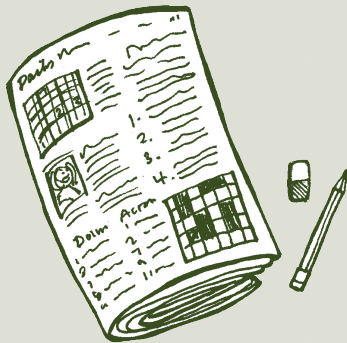


# Our Care

Our care packages are all different. Special attention is given to each one so that it is bespoke to you. It will be tailored to enable you to be as independent as possible but will also give you all the support and care you need.

Training our carers to the highest standard possible is an important part of Acquire Care's ethos. By having a specialist trainer with in-house training facilities, we ensure that all our carers are fully trained and vetted as required by the Care Quality Commission. This includes the completion of Independent Safeguarding Authority and Disclosure Barring Services checks. These were previously known as Criminal Records Bureau checks. References are also required.

The training covers everything from Moving and Handling, Health and Safety to Food Hygiene and Medication. Throughout their career, our carers will be assessed with on-going training given. This means that as your needs change, the carers will be able to adapt and assist you at all times.



10am: Morning paper





## Our Services

The same services are offered for Hourly Care and Live-in Care.

These could include:

- Personal care and support (including getting-up, toileting, bathing, washing)
- Overnight sleep-over / waking night
- Sitting and companionship support
- Overseeing medication
- Food / meals preparation
- Shopping / collecting prescriptions
- Dementia care
- Hospital discharge and support
- Respite care
- Palliative care
- Help with learning, physical and sensory disabilities
- Attend appointments
- Escorted outings
- Administrative tasks
- Laundry and general housework
- Pet care / dog walking



Midday: Lunch

visit [www.acquirecare.co.uk](http://www.acquirecare.co.uk)

talk to us 01865 601010





## Hourly Care

You may decide that only a small amount of help is needed. By offering a range of care services, Acquire Care is able to make your wish of staying in your own home, amongst your family and friends, a reality. Acquire Care will allow you to maintain your independence in a dignified manner.

Hourly Care is a tailor-made package of visits where general every day and personal care tasks can be completed for you depending on the level of help required. This can be from a short visit up to as many hours as is requested.

Our carers always carry an Acquire Care identification badge and wear an Acquire Care uniform.



2pm: Visit to the shops

visit [www.acquirecare.co.uk](http://www.acquirecare.co.uk)

talk to us 01865 601010



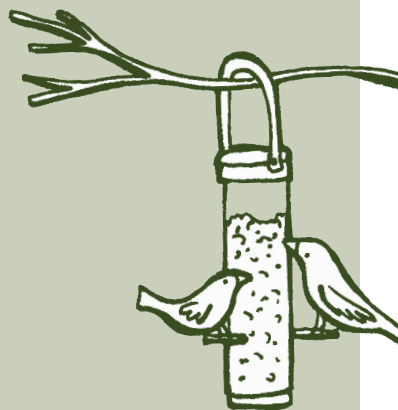


# Live-in Care

This is an important alternative to residential care.

As we become older, many of us wish to remain as independent as possible whilst staying in our own home, amongst familiar surroundings. Acquire Care can make this possible. Our helpful friendly carers can help you live how you wish. The care supplied would follow a tailor-made care plan to fit in with your existing preferences but would be reviewed frequently and therefore be flexible. As the name suggests, the carer would live in the house with the person they are looking after. Live-in care means peace of mind for you and your family as someone who is caring and responsible will always be there.

A private bedroom must be available for the carer. The resources for their meals must also be provided.



3pm: Watching visitors in the garden

visit [www.acquirecare.co.uk](http://www.acquirecare.co.uk)

talk to us 01865 601010





## What happens next?

Once you and your family have read our brochure, please contact us to discuss any questions or queries that you may have. We will offer you a free, no-obligation meeting in your own home so that you and your family or friends can meet a senior member of our team. Your needs and wishes will be discussed to enable us to give you the help and support needed. All your questions can be answered in full at this meeting although, after the meeting, please contact us to ask any other queries that may have been thought of.

After this meeting, we will compile an individual care package for you. This will include everything that is needed to support and care for you in your own home. The care package will then be discussed with you and your family. When you are happy with the care plan, then your care and support can start. The plan will be frequently reviewed so that you will be given the help that you want when you need it.



6pm: Dinner

visit [www.acquirecare.co.uk](http://www.acquirecare.co.uk)

talk to us 01865 601010





## Testimonials

“Thank you to all of you for continued and reliable compassionate service. It has been a pleasure to deal with your company. The quality of care is excellent.”

*Mrs. L. Oxford.*

“I would like to record my sincere gratitude and appreciation for the care delivered by your staff to my wife. They were most attentive, considerate and caring; excellent and professional in every way.”

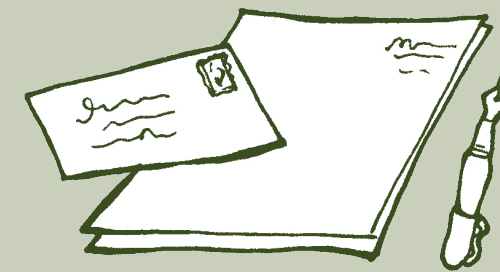
*Mr C. Oxford*

“Thank you for providing all the support I needed after surgery. All the Carers were what you promised they would be and all with their own individual, friendly personality.”

*Mrs S. Oxford*

“On behalf of my family, I would like to send you our heartfelt thanks for your care and support of Dad over the last year. As I hope you know he was very appreciative and thankful for the care provided by all your carers and to him every visit was special. We always felt that he was in safe hands which provided the support we needed as a family.”

*Mr V. Oxford*



7pm: Keeping in touch with old friends





## Costs and Funding

The cost of any long term care, whether Hourly Care or Live-in Care, can be a concern. The cost varies according to the amount of care and support that is supplied. There is a variety of funding which may be accessible to you to help with the costs. This includes Attendance Allowance.

Social Services may help. Your eligibility will be subject to a financial assessment by the local authority.

For details of possible funding or benefits available, please contact:  
The Attendance Allowance Helpline **0345 605 6055** or visit **[www.direct.gov.uk](http://www.direct.gov.uk)**



9.30pm Goodnight

visit [www.acquirecare.co.uk](http://www.acquirecare.co.uk)

talk to us 01865 601010



# Contact Us

For more information about Acquire Care contact us:

01865 601010

[info@acquirecare.co.uk](mailto:info@acquirecare.co.uk)

Shotover Kilns | Shotover Hill | Headington | Oxford | OX3 8ST



acquire care

helpful friendly care for you

[www.acquirecare.co.uk](http://www.acquirecare.co.uk)